

‘AAA-intro.ly’

# Introduction

This document shows examples from the [LilyPond Snippet Repository](#).

In the web version of this document, you can click on the file name or figure for each example to see the corresponding input file.

**This document is for LilyPond version 2.11.28**

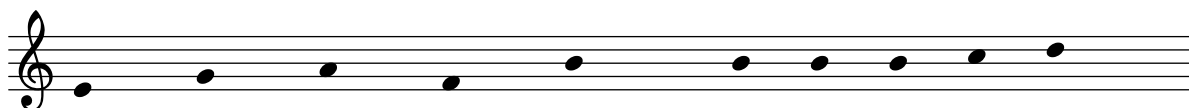
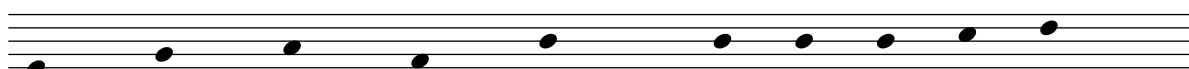
`‘engravers-one-by-one.ly’`

The notation problem, creating a certain symbol, is handled by plugins. Each plugin is called an Engraver. In this example, engravers are switched on one by one, in the following order:

- note heads
- staff symbol,
- clef,
- stem,
- beams, slurs, accents,
- accidentals, bar lines, time signature, and key signature.

Engravers are grouped. For example, note heads, slurs, beams etc. form a Voice context. Engravers for key, accidental, bar, etc. form a Staff context.

You may only see the first example in this document; please download this snippet and run it from your own computer.





`'removing-time-signature-and-bar-lines.ly'`

Engravers can be removed one by one. Here, the time signature and bar lines have been removed.

